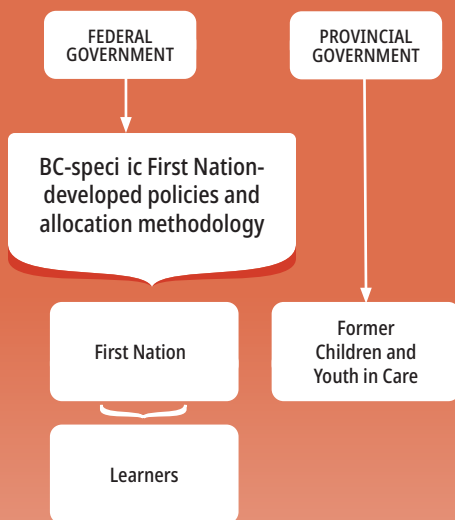


# BC FIRST NATION TRIPARTITE POST-SECONDARY EDUCATION MODEL

## FIRST NATION LEARNERS



First Nation have funding for all learners to receive the support required to pursue post-secondary education and training.

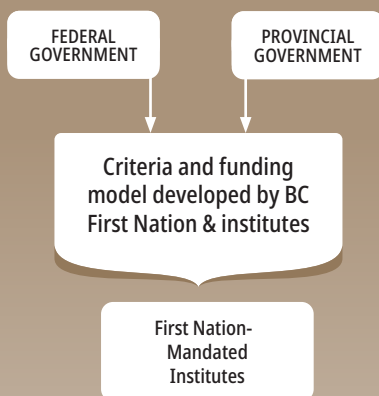
Regional program guidelines replace the PSSSP/ UCEPP National Program Guidelines, providing First Nation control and increased flexibility, including reduced reporting requirements.

Appropriate First Nation funding to support capacity to effectively administer learner funding and provide support to learners.

Support the unique needs of categories of learners (e.g. learners requiring upgrading, learners with disabilities, and adult education learners).

Full provincial funding is in place for former children and youth in care to attend and succeed in PSE (e.g., living allowance, books and supplies).

## FIRST NATION MANDATED POST-SECONDARY INSTITUTES



First Nation-mandated institutes have ongoing core funding, anchored in legislation that recognizes their integral role in the BC PSE system.

Funding is provided for building the capacity of the First Nation-mandated institutes system.

Funding is provided to the Indigenous Adult and Higher Learning Association to provide advocacy and support for First Nation-mandated institutes.

A capital strategy is developed for First Nation-mandated institutes.

## COMMUNITY-BASED PROGRAM DELIVERY



First Nation have funding to deliver PSE programs that respond to community priorities.

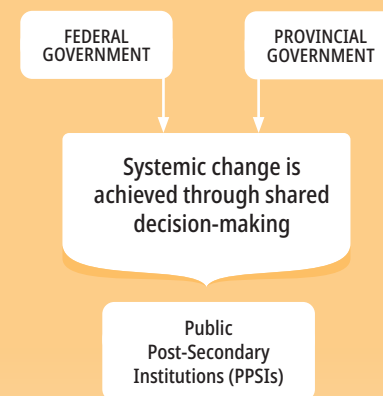
First Nation and their institutes have funding to deliver language programs.

Regional program guidelines replace the national and provincial program guidelines, providing First Nation control and increase flexibility, including reduced reporting requirements.

Funding is distributed exclusively to First Nation and their institutes through a First Nation-controlled process that is fair, equitable and transparent.

First Nation and their institutes have funding to support partnerships with public post-secondary institutions to deliver adult basic education to adult learners in their communities.

## RESPECTFUL & RESPONSIVE PUBLIC POST-SECONDARY SYSTEM



BC and PPSIs build capacity to be more responsive to the needs of First Nation learners and communities.

PPSI partnerships with First Nation and their institutes are based on respect, relevance, reciprocity and responsibility.

The PSE system is less colonial and is free of racism and discrimination.

BC and PPSIs implement the Indigenous PSE Policy Framework, the TRC Calls to Action and the UN Declaration on the Rights of Indigenous Peoples.

PPSIs direct core funding to support First Nation-related initiatives.

Appropriate data, reporting and accountability for First Nation learner achievement.

APPROPRIATE ADMINISTRATION/CAPACITY FUNDING FOR FIRST NATIONS AND FNESC